



# CMRS-B REVERSE OSMOSIS

## Complete Point Of Use Solution For Your Home

EVERPURE  
CMRS600MD-B55  
REVERSE OSMOSIS SYSTEM



Smart, Sustainable Water Solutions.

**FOR LIFE.**



ADJUSTABLE TDS



SMART DIGITAL  
DISPLAY

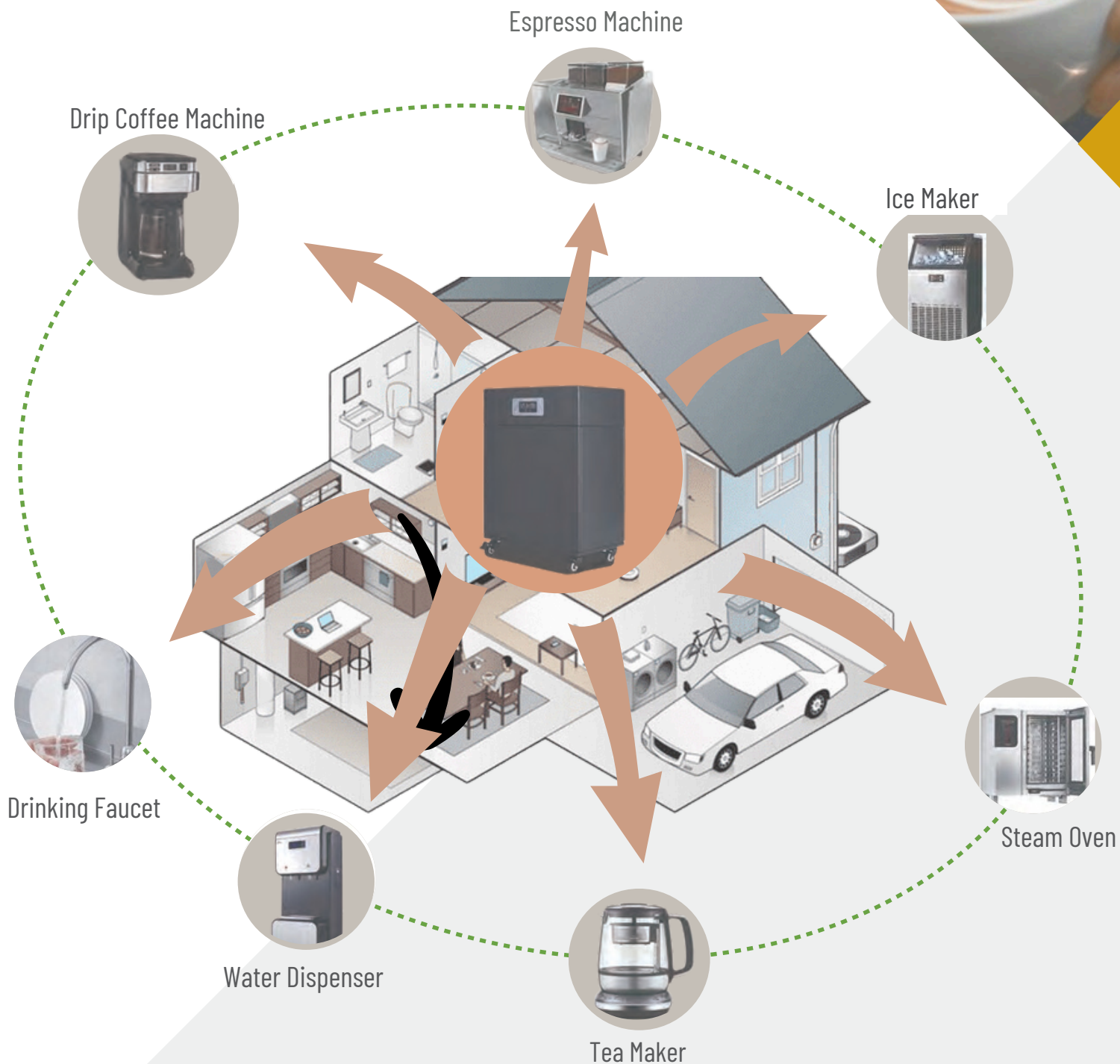


MULTI-STAGE  
FILTRATION



SMART DESIGN  
SYSTEM

# PURE WATER FOR DRINKING



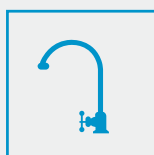
ESPRESSO MACHINE



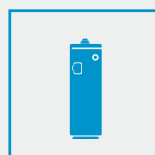
DRIP COFFEE MACHINE



ICE MAKER



DRINKING FAUCET



WATER DISPENSER



TEA MAKER

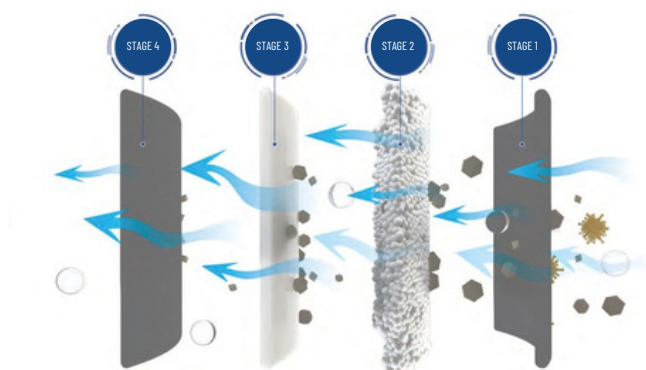


STEAM OVEN

# MULTI-STAGE FILTRATION

	Filter Element	Features
STAGE 1	Everpure EV-FD05C4 Filter Cartridge (0.5 micron Fibredyne Carbon)	Removes particles, chlorine, organics, other impurities
STAGE 2	Phosphate (Scale Inhibitor)	Inhibits limescale buildup & prevent RO membrane from fouling
STAGE 3	Reverse Osmosis Membrane 600 Gallons per Day	Reduces TDS & remove harmful heavy metals *
STAGE 4	Everpure EV-FD05C4 Filter Cartridge (0.5 micron Fibredyne Carbon)	Final stage of polishing to improve taste

\*Heavy metal ions include arsenic, cadmium, chromium, lead, etc.



## HIGH FLOW RO MEMBRANE First Grade Water Efficiency



Meet the Home's **all day**  
and during peak hours - water demand



**800 cups a day**  
Calculated based on a 16-ounce  
(437mL) drink



**90 cups per hour**  
during peak hours  
Calculated based on a 16-ounce  
(437mL) drink



The peak water consumption of the ice machine is **constantly** supplied  
Calculated based on a 600lbs ice maker

## SMART DIGITAL DISPLAY WITH REAL-TIME READING ALLOWS CONSTANT MONITORING OF WATER QUALITY Smart Built-In Safety Features

### HD LED DISPLAY



- Real-time display of TDS value
- Intelligent controller tracks lifespan of filter cartridges
- Flow rate display, tracks water usage throughout the day
- Leak detector activates error light, alarm and automatically stops water flow

### TOUCH BUTTONS FOR EASY OPERATION WITH WET HANDS

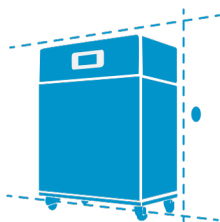


- SELECT : view TDS value of inlet, RO and blended water
- PEAK : adaptive peak mode to meet the occasional high flow demand
- RESET : restarts the lifespan tracking of new cartridges
- FLUSH : flushing of new RO membrane and after short periods of non-use

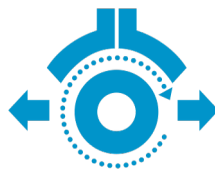




# COMPACT UNDER THE CABINET DESIGN SAVES SPACE



**Under-cabinet installation**  
Compact size  
48 cm x 28 cm x 65 cm (L x W x H)



**Easy to move**  
Bottom Wheel Design for Flexibility



**Not wall mounted**  
Compact & Convenient For Kiosk/Booth

## Pentair Everpure CMRS600MD-B55 Reverse Osmosis System - Product Specifications

Product Description	Blended Water Flow Rate	Blended Water Capacity	RO Water Flow Rate	RO Water Capacity	Inlet Water Pressure	Power Supply	Dimensions
<b>Pentair Everpure CMRS600MD-B55</b>	4 L/min	12 m <sup>3</sup>	1.5 L/min	7m <sup>3</sup>	20 - 50 PSI	220V 50/60 Hz	48cm x 28cm x 65cm (Length x Width x Height)
<b>20 Gallons Storage Tank*</b>							38cm x 79cm (Diameter x Height)

Replacement Cartridge	QUANTITY/SET
<b>Everpure EV-FD05C4 Filter Cartridge (0.5 micron Fibredyne Carbon)</b>	2
<b>Phosphate Scale Inhibitor</b>	1
<b>RO - Reverse Osmosis Membrane</b>	1

\* The main unit does not include a storage tank, which is purchased separately.

**Authorized distributor**

**Aquality Intelligent Solutions Pvt. Ltd**



8-1-284/OU/566, 2nd Floor, OU Colony, Shaikpet, Hyderabad,  
Telangana, India, 500008

+91 70938 98486 | sales@aquality.in | aquality.co.in



Pentair Offices in South East Asia

**Singapore**  
390 Havelock Road  
#04-01 King's Centre  
Singapore 169662  
Tel: +6567685900

**Philippines**  
5th Floor MAIA Suites  
1747 Nicanor Garcia Street corner  
D.Oliman Street Makati City, Philippines  
Tel: +632824 3825

**Thailand**  
16th Floor, The Ninth TowersGrand RAMA 9,  
Tower B 33/4 Rama 9 Road, Huaykwang  
Bangkok 10310, Thailand  
Tel: +6621681092

All Pentair trademarks and logos are owned by Pentair. All other brands or product names are trademarks or registered marks of their respective owners. Because we are continuously improving our products and services, Pentair reserves the right to change specifications without prior notice. Pentair is an equal opportunity employer. 2021 Pentair. All Rights Reserved.